

## Section 12

# PRIME CATTLE

Showground PIC – NG251822

**Chief Steward** - Kris Trow **0497 627 962**

**Stewards** - Paul Macrae, Jon Pinferi, Tom Chard, Mitch Southgate,  
Gordon Wollen, Nathan Purvis

**Entries close 4:00pm 8<sup>th</sup> February 2023**

**This section is proudly supported by the following sponsors**

**PBA Feeds**

**Flycam P/L**

**Norco Rural**

**The Crothers Family**

**Lockyer's Transport**

**Colin Say & Co**

**NAB Agribusiness**

**The Whitaker Family**

**JR & AL Ritchie Rural P/L**

**Riverina Stockfeeds**

**CRT Say & Co Rural**

**Vetmec Cattle Drench**

**Glen Innes Vet Hospital**

**Entry Fees** – GI Show Members \$ 5 per class, Non-Members \$ 10 per class

### **PENNING UP and JUDGING TIMES**

**Hoof Classes** (1 – 5) must be penned by **9:00am on Friday 10<sup>th</sup> February 2023**

**Commercial Classes** (6 – 9) must be penned by **9:00am on Friday 10<sup>th</sup> February 2023**

Judging will commence at 1:00pm Friday

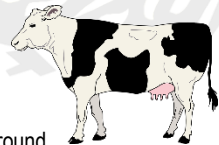
All vehicles are to be removed from the Showground immediately following delivery of exhibits. Members with a valid Members Car Pass will enable the vehicle to be parked only in the Members Car Parking area, but no exhibitor vehicles are to be parked west of Yarraford Hall gate.

### **CONDITIONS OF ENTRY**

**Johne's Disease** – Exhibitors are required to have a signed Health Declaration that to their knowledge their cattle have not been in contact with any stock which have originated from a property which is known to have been infected with Johne's Disease. Exhibitors are required to declare that Johne's Disease is not known or suspected to have occurred in the past five (5) years on the property from which the cattle have come.

**NLIS Identification** – All stock **MUST** be fitted with a NLIS device before leaving the property.

- The exhibitor must have owned all entries for at least three (3) months prior to the competition.
- All entries in the hoof classes must be naturally polled, de horned or tipped.
- Cattle may be purebred or crossbred of any breed combinations.
- All entries will be judged in the Judging Ring.
- No exhibit to compete in more than one class unless otherwise specified.
- It is the owner's responsibility to feed and water the exhibit whilst on the showground.
- Entries will be mouthed, weighed and numbered. Electronic scales will be used for weighing.
- The judges in making their decision will take into consideration weight for age, conformation, muscling, absence of wasteful fat, market suitability and in the case of pens the uniformity of the pen in weight and type.



- The committee reserves the right to restrict or refuse entries if necessary.

## Hoof Classes (1 – 5) Penned by 9:00am – Judging at 1:00pm

### 1. Pen of Three Feedlot Steers suitable for short feed (100 to 150 days)

- Specifications :**
- Approx Age : milk to 2 teeth
  - Muscle Score : C or better
  - Approx. Entry Live Wght : 350 to 480 kg
  - Approx. Rib Fat : 0 to 8 (approx fat score 2 to +2)
- Target Carcass Specifications**
- Carcass Weight : 300 to 400kg after 100 to 150 days on feed
  - Fat P8 site : 7 to 22 mm

1<sup>st</sup> Perpetual Trophy + ½ tonne PBA Feed Supplement      2<sup>nd</sup> 1 x Packet Vetmec Drench

### 2. Trade Single Heifer Class

- Specifications :**
- Approx Age : milk to 2 teeth
  - Muscle Score : C or better
  - Approx. Entry Live Wght : 350 kgs **plus**
  - Approx. PH Fat : 6 to 20 mm

1<sup>st</sup> ½ tonne Riverina Stockfeed      2<sup>nd</sup> 1 x Packet Vetmec Drench

3<sup>rd</sup> \$50 donated by JR & AL Ritchie Rural P/L

### 3. Medium Steer Class – Grass Fed

Pen of 3 Steers – showing not more than 2 permanent teeth. Grass Fed

- Specifications :**
- Live Weight : 451 – 549 kg
  - Pref Fat Depth Rump P8 : 12 to 18mm

1<sup>st</sup> ½ tonne PBA Feed Supplement      2<sup>nd</sup> 1 x Packet Vetmec Drench

### 3A. Grain Assisted Steer

Pen of 3 Steers – showing not more than 4 permanent teeth. Grain Assisted

- Specifications**
- Live Weight : 450 kg +
  - Pref Fat Depth Rump P8 : 12 to 18mm

1<sup>st</sup> ½ ton Riverina Stockfeeds      2<sup>nd</sup> \$ 50 donated by JR & AL Ritchie Rural P/L

### 4. Des Kilner Memorial Bullock Class

Pen of 3 Steers – milk to 4 teeth. Grass or Grain

- Specifications :**
- Live Weight : 550 kg +
  - Pref Fat Depth Rump P8 : 12 to 18mm

1<sup>st</sup> ½ tonne PBA Feed Supplement      2<sup>nd</sup> 1 x Packet Vetmec Drench

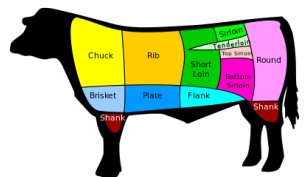
### 5. Jackpot Single Steer

Based on suitable MSA graded carcass

- Specifications :**
- Approx Age : milk to 2 teeth
  - Muscle Score : C or better
  - Approx. Entry Live Wght : 400 kgs **plus**
  - Approx. PH Fat : 6 to 20 mm

1<sup>st</sup> Waterloo Perpetual Trophy + ½ ton Riverina Stockfeeds

2<sup>nd</sup> 1 x Packet Vetmec Drench      3<sup>rd</sup> \$50 donated by JR & AL Ritchie Rural P/L



**Champion Overall – Classes 1 – 5**

## \$ 200 NAB Agribusiness Trophy

### Commercial Classes (6 – 9) Penned by 9:00am – Judging at 1:00pm

#### 6. Replacement Pen of Three Heifers

- Specifications :**
- Any Breed or Cross
  - Showing NO more than 4 permanent teeth
  - Group to be judged on conformation and quality as a commercial group showing breeding potential

1<sup>st</sup> ½ tonne PBA Feed Supplement      2<sup>nd</sup> \$ 150 donated by Whitaker Family

#### 7. Breeding Heifer (Heifer & First Calf)

- Specifications :**
- Any Breed or Cross
  - Showing NO more than 4 permanent teeth
  - Calf at foot not to exceed 8 months
  - Group to be judged on conformation and quality as a commercial group showing breeding potential

1<sup>st</sup> ½ tonne Riverina Stockfeed      2<sup>nd</sup> \$ 100 donated by Lockyer's Transport

#### 8. Commercial Breeders Group (Cow & Calf and Replacement Heifer)

- Specifications :**
- Any Breed or Cross
  - Cow with suckling steer or heifer calf at foot, and a replacement heifer of any breed or cross
  - Calf at foot not to exceed 8 months
  - Replacement heifers showing NO more than 2 permanent teeth
  - Group to be judged on conformation and quality as a commercial group showing breeding potential

1<sup>st</sup> \$ 100 NAB Agribusiness Trophy and 1 x Packet Vetmec Drench      2<sup>nd</sup> \$ 100 donated by Crothers Family

#### 9. Single Cow & Calf Unit

- Specifications :**
- Any Breed or Cross
  - Cow with suckling steer or heifer calf at foot, of any breed or cross
  - Calf at foot not to exceed 8 months
  - Group to be judged on conformation and quality as a commercial group showing breeding potential



1<sup>st</sup> \$ 100 donated by GI Vet Hospital      2<sup>nd</sup> \$ 100 donated by CRT Say & Co Rural

### Most Successful Exhibitor of the Show

Points are calculated over the two days of Prime Cattle Judging

And are awarded as follows – 1<sup>st</sup> 3pts    2<sup>nd</sup> 2pts    3<sup>rd</sup> 1pt

**Prize :** 5 bags Norco Cattle Ration & 1 x Packet Vetmec Drench

